



YOLO COUNTY FSA NEWS



Volume 5

September 2005

Yolo County FSA

221 W. Court, Suite 3B
Woodland, CA 95695
(530) 662-3986 x 2
(530) 662-4876 FAX

Hours:

Monday – Friday
8:00 AM – 4:30 PM

County Committee:

Tom Slater, Chairperson
Randy Timothy, Vice Chair
Bob Paschoal, Member
Rudy Lucero, Jr., Advisor
Marlene Schuler, Advisor

County Executive

Director:

Marianne A. Morton

County Office Staff:

Nathan Bohl
Robert Currey
Violet Hayes
Laura Hernandez
Caroline Walgenbach



Columbus

This office will be closed
on October 10th in
observance of Columbus
Day



**LAA-3 COUNTY
COMMITTEE ELECTION**

The election of responsible agricultural producers to FSA county committees is important to all farmers and ranchers. County committees are a direct link between the farm community and the U.S. Department of Agriculture and are a critical component of the day-to-day operations of FSA.

Ballots for the Yolo County FSA Committee Local Administrative Area 3 (Elkhorn, West Sacramento and Clarksburg) election will be mailed to all eligible voters in November. Completed and signed ballots are due back in the county office by the close of business on December 5th.

Nominees:

This year, the producers that were nominated were Jeanne Ireland and Thomas Slater.

Jeanne Ireland: Jeanne's family has owned land in Yolo and Solano counties since 1949. Five generations of her family have

lived in West Sacramento, where she was born, attended schools and still resides. She currently works for the State of California and is a Farm Bureau member. As a landowner, Jeanne recognizes the many challenges and issues farmers face and views the County Committee system as a means of advocating for the agricultural community.

Thomas Slater: Tom is a third-generation farmer who was born and raised in Clarksburg and resides there with his wife Deanna and son Matthew. He is a member of a family farming operation that grows corn, wheat, safflower, alfalfa and grapes. Tom received a Bachelor of Science in Agricultural Economics from University of California, Davis. He currently serves as Yolo County FSA Committee Chairperson and is a California Farm Bureau life member.

The office would like to thank the nominees for their willingness to serve.



**2006 DCP SIGN UP
BEGINS OCTOBER 1**

Farm producers must apply for the Direct and Counter-cyclical Program (DCP) on an annual basis.

The CCC-509 (DCP Contract) must be submitted by June 1, 2006. All owners and operators who will share in the DCP payments on the farm must sign the CCC-509. Forms with signatures that are obtained after June 1, 2006 but before September 30, 2006 will be accepted, but the farm will be assessed a late-file fee of \$100.



For the second year, FSA is offering producers the option to sign up for the program online. This time-saving electronic service is part of the Bush Administration's e-Government initiative to improve delivery of services.

The electronic DCP service allows producers to choose 2006 DCP payment options, assign crop shares and sign and submit their contracts electronically from any computer with Internet access.

The voluntary service is available to all producers who are eligible to participate in DCP. The service has strict security measures to protect participants' private information, as only authorized federal employees have access to information that is submitted electronically.

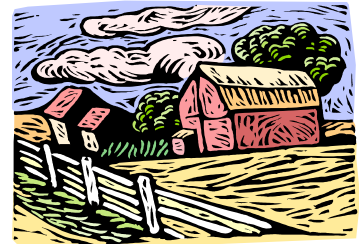
To access the service, eligible producers must have an active USDA e-Authentication Level 2 account, which requires filling out an online registration form at <http://www.eauth.egov.usda.gov> followed by a visit to the local USDA Service Center for identity verification.

DCP sign-ups are by taken by appointment only. Call today to schedule your appointment. 2006 DCP advance direct payments can be issued in December 2005.

e-LDP's AVAILABLE

Producers across the country are now able to file LDP requests electronically (e-LDP's) without leaving their offices. This new system allows farmers to send an online application to a central processing site where the payment is calculated. Once the payment is calculated, the payment is routed electronically to the customer's bank account. To find the daily LDP rate for Yolo County barley,

canola, corn, grain sorghum, oats, safflower, soybeans, sunflowerseed and HRW wheat, go to: <http://www.fsa.usda.gov/dafp/psd/ldp/ldpcldp.asp?myfips=06113&txtcroyear=2005> The weekly LDP rate for rice can be found at: <http://www.fsa.usda.gov/dafp/psd/RiceRates.htm>



**2006 FARM
RECONSTITUTIONS
AVAILABLE OCTOBER 1**

To be effective for 2006, farm combinations and farm divisions must be requested by August 1, 2006.

When land with contract acres is sold, those contract acres normally transfer with the land to the new owner based on a cropland ratio. However, the landowner and purchaser can agree to divide the contract acres in any manner that is mutually agreeable.

To use this designation by landowner method, the land sold must have been owned for at least three years and the owner and purchaser must sign a memorandum of understanding designating contract acres before completing the sale.

NEW LDP FORM UNVEILED

A new streamlined process has been unveiled that makes it easier for agricultural producers to receive loan deficiency payments (LDP's).

FSA developed the new form to help ensure that agricultural producers obtain LDP's when they are requested and when producers still have beneficial interest. Previously, producers had to complete and submit a CCC-633 LDP or a CCC-709 Field Direct LDP form prior to losing beneficial interest in the harvested commodity in order to receive LDP benefits. Some farmers inadvertently lost beneficial interest in their commodities before submitting these forms, making them ineligible to receive benefits.

Producers will now annually fill out the new CCC-633 EZ form to receive LDP benefits for all eligible crops on all their farms and submit page 2 of the new form when the producer requests LDP's. The form will be effective for the 2005 and subsequent crop years.

A producer must have beneficial interest in the commodity (control of the commodity, risk of loss and title to the commodity) at the time the CCC-633 EZ is completed and

submitted to the FSA office.

Either at the time a producer first submits the CCC-633 EZ, or any time before the final loan availability date, the producer must request a payment for a specific quantity and provide acceptable production evidence. The LDP rate is based on the earlier of the date of request for payment or date beneficial interest is lost.

LDP's are obtained by producers who are eligible to obtain marketing assistance loans, but who agree to forgo the loans. By filing a CCC-633 EZ, producers do not preclude themselves from obtaining marketing assistance loans on applicable crops. The LDP rate equals the difference between the county loan rate and the posted county price for the respective commodity. The CCC-633 EZ is available online at www.fsa.usda.gov/dafp/psd and at <http://forms.sc.egov.usda.gov/eforms/mainervlet>

NOTICE

It is the producer's responsibility to contact the County Office in order to meet program deadlines listed on the back page of this newsletter.

NONINSURED CROP DISASTER ASSISTANCE PROGRAM

NAP was designed to reduce financial losses that occur when a natural disaster causes a catastrophic production loss or prevented planting of commercial crops produced for food or fiber for which the CAT level of crop insurance is not available.

To apply for coverage, producers must pay the non-refundable applicable service fees equal to \$100 per crop per county, not to exceed \$300 per producer per county and \$900 per producer for all counties at the local FSA office by the application closing date.



Producers must notify their local FSA office within 15 days of the: 1) occurrence of any natural disaster condition; 2) final planting date if crops are prevented from planting because of a natural disaster; or 3) the date of damage to the crop or loss of production becomes apparent. Producers must file a CCC-576 (Notice of Loss and Application for Payment) even if they intend to harvest the affected crop.

IMPORTANT DATES

9/30/05	2005 DCP sign-up deadline (with \$100 per farm late-file fee) ALL SIGNATURES MUST BE SUBMITTED BY THIS DATE!
October 2005	2004 final corn, cotton, grain sorghum and soybean CC rates announced 2005 first advance CC rates announced 2005 DCP final direct payments issued 2006 DCP sign-up begins 2006 farm reconstitutions available
10/10/05	Closed for Columbus Day
11/24/05	Closed for Thanksgiving Day
11/29/05	Final date for authorized grazing of CRP acres (1st 60-day period)
December 2005	Begin issuing 2006 DCP advance direct payments
12/01/05	NAP 2006 application closing date (ACD) – honey Beginning date for authorized grazing of CRP acres (120-day period)
12/05/05	Final date to return LAA-3 election ballots
12/15/05	NAP 2006 ACD - almonds, apples, apricots, asparagus, cherries, grapes, nectarines, olives, peaches, pears, persimmons, plums, pomegranates, strawberries and walnuts
12/26/05	Closed for Christmas

The United States Department of Agriculture (USDA) prohibits discrimination in its programs on the basis of race, color, national origin, sex, religion, age, disabilities, political beliefs and marital or familial status. (Not all prohibited bases apply to all programs.) Persons with disabilities who require alternative means for communication of program information (Braille, large print, audio type, etc.) should contact the USDA's TARGET Center at (202) 702-2661 (voice and TDD). To file a complaint, write the Secretary of Agriculture, U.S. Department of Agriculture, Washington, D.C. 20250 or call (800) 245-6340 (voice) or (202) 720-1127 (TDD). USDA is an Equal Opportunity Employer.

UNITED STATES DEPARTMENT OF AGRICULTURE
Yolo County Farm Service Agency
221 West Court Street, Suite 3B
Woodland, CA 95695

Presorted Standard
U.S. Postage Paid
Permit No. 22
Davis, CA



www.fsa.usda.gov