

California Wheat

Made with the Golden Touch!

Weekly Wheat Bulletin

Date: March 1, 2007 Issue# 7

*The Weekly Wheat Bulletin is designed to share quick, informal and reliable information about the state's wheat crop and disease conditions. Comments forwarded by Thursday morning of each week will be posted in the Bulletin for distribution Thursday evening. Archived copies of the 2007 Wheat Bulletin may be accessed on the California Wheat Commission website:
www.californiawheat.org*

General Comments:

2-23-07 - "I do not think I have seen the irrigated and dryland wheat in Solano County look this good in many years. If we continue to receive a few timely rains we should have a very good crop" - *Alan Freese, Grower, Birds Landing, CA*

3-01-07 - "I am starting to hear about light vein yellowing in some wheat in the Delta, which I'll check out Friday. This makes me think that as the weather warms following this last rainy period we need to be out scouting. I am happy we have made it through February without problems and can expect a more "normal" disease season. It appears that septoria is much slower getting started this season, so I would not expect to see the severe damage we have seen the last 2 seasons.

My large wheat variety trials are all looking very good with no disease in them yet. I welcome everyone to come out and see the new wheat and triticale cultivars." *Kent Brittan, Farm Advisor, Yolo, Solano, Sacramento counties.*

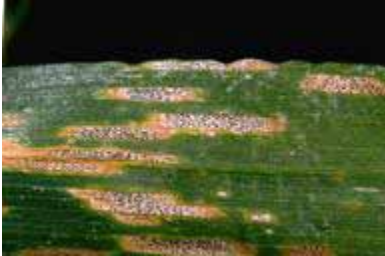
Know Your Wheat Diseases:

From: Small Grain Production Manual, Part 6: Pest Management of Small Grains – Diseases, University of California Agriculture and Natural Resources, Publication 8169.
<http://www.ipm.ucdavis.edu/PMG/r730100111.html>

Septoria Tritici Blotch of Wheat -
Septoria tritici blotch affects only wheat and is an important foliar disease of wheat in the Sacramento and northern San Joaquin valleys. It is particularly severe in years of higher than average rainfall and is especially damaging when late spring rains persist after emergence of the flag leaf.

Symptoms occur on foliage as small gray dead areas that expand to irregularly shaped blotches. The blotches (lesions) begin as light green areas that appear to be limited at first by the leaf veins. The light brown lesions change to yellow areas in a few days, then to reddish brown, ending as grayish tan necrotic areas with small, black specks inside the dead areas. The black specks (pycnidia) within the lesions are the asexual fruiting structures of *Septoria tritici* and exude pinkish brown, column-shaped, jellylike masses of spores (conidia) upon

wetting by rain or dew. These asexual conidia thus function as a source of inoculum to spread the disease within an infected field.



The fungus survives between cropping seasons primarily as *M. graminicola* on wheat residue. The presence of the airborne ascospores, capable of long distance spread in the wheat growing regions, means that crop rotation will not afford escape from this source of inoculum. The impact of the disease is most severe in early planted wheat (October) because the plants are exposed to the pathogen over a longer period of time during a period when weather conditions are frequently favorable to disease development. Consequently, later plantings of wheat (Nov. to Dec.) are less likely to be severely affected.

Next Week's Bulletin – Stem Rust.

Weather (www.weather.com):

Below are the precipitation totals for the period Feb 22 – Feb 28, 2007)

<u>County/City</u>	<u>Precipitation</u> <u>02/22/07-02/28/07</u>
--------------------	--

Siskiyou-Shasta

Siskiyou: Yreka, CA	0.85
---------------------	------

Northeast

Lassen: McArthur	0.60
Modoc: Alturas, Ca	0.60

Central Coast

Alameda: Livermore, CA	2.14
Contra Costa: Martinez, CA	1.85
San Benito: Hollister, CA	1.01
San Luis Obispo:	
San Luis Obispo, CA	1.86

Sacramento Valley

Butte: Chico, CA	2.47
Colusa: Colusa, CA	2.07
Glenn: Glenn, CA	2.47
Sacramento:	
Sacramento, CA	1.73
Solano: Vacaville, CA	1.92
Sutter: Yuba City, CA	2.07
Tehama: Tehama, CA	0.74
Yolo: Woodland, CA	1.93
Yuba: Marysville, CA	2.07

San Joaquin Valley

Fresno: Fresno, CA	1.75
Kern: Bakersfield, Ca	0.37
Kings: Hanford, CA	0.42
Madera: Madera, CA	2.07
Merced: Merced, CA	1.35
San Joaquin: Stockton, CA	1.37
Stanislaus: Modesto, CA	0.94
Tulare: Visalia, Ca	0.44

Southern California

Imperial: El Centro, CA	0.00
Riverside: Menifee, CA	0.44
Riverside: Blythe, CA	0.00